

Gravity lowering HIC



TECHNICAL DATA

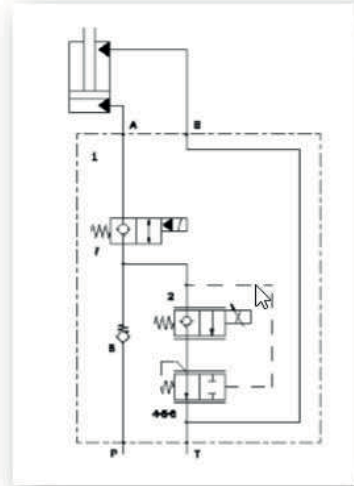
- Max. flow: 30 l/min
- Max. Pressure: 210 bar

CHARACTERISTICS

- Electrical proportional post-compensated lowering valve, directly mounted on the cylinder
- Compared to standard solutions, the HIC Gravity Lowering integrates both – relief function and meter-out
- The main control valve should only provide the meter-in. Therefore the hydraulic circuit is simplified (a simple 2-way proportional cartridge valve can be used instead of a slice of the main control valve)
- The HIC Gravity Lowering can be totally customized according to customer specifications. The concept was developed for AWP but is also applicable for other mobile applications

Customer benefits

- Energy and fuel savings
- Simplification of the hydraulic circuit
- Excellent controllability
- Optimal stability
- Compact solution: smaller dimensions and low weight
- Customized solution according to specific customer requirements



MOVECO SRL

Via Arturo Biella, 19 - 28075 Grignasco (NO)
www.movecosrl.com info@movecosrl.com
Tel. +39 0163 418 128
ITALY